

Sales presentation, as of 06.2026

# Bosch Manufacturing Solutions | BMG



# The Bosch Group

Corporate presentation as of 04.2026



# Invented for life



# Who we are

## Our company in figures

In 2025



91.0

billion euros  
sales revenue



1.8

billion euros EBIT  
from operations



413 000

Bosch associates  
worldwide at year-end  
(approx.)



500

subsidiaries and regional  
companies (approx.) in  
more than **60** countries

# Who we are

## Our business sectors



**Mobility**



**Industrial Technology**



**Energy and Building Technology**



**Consumer Goods Technology**

# Who we are

## Industrial Technology



As a pioneer in the domain of connected industry, Bosch is a leading supplier of software, systems, and components for a wide variety of manufacturing and logistics applications.

# Who we are Industrial Technology

In 2025



7%

share of Bosch  
Group sales



6.5

billion euros  
sales revenue



33,921

associates

# Who we are

## Industrial Technology



### Drive and Control Technology

- Mobile Hydraulics
- Machinery Applications
- Factory Automation

### Bosch Manufacturing Solutions

- Production equipment & automation: special purpose machinery
- Individual assembly and testing systems
- advanced manufacturing processes and technologies
- digital & intelligent solutions and services along entire product lifecycle

### Bosch Connected Industry

- Production & logistics software from a single source

# Who we are

## Industrial Technology



### Drive and Control Technology

- Mobile Hydraulics
- Machinery Applications
- Factory Automation

### Bosch Manufacturing Solutions

- Production equipment & automation: special purpose machinery
- Individual assembly and testing systems
- advanced manufacturing processes and technologies
- digital & intelligent solutions and services along entire product lifecycle

### Bosch Connected Industry

- Production & logistics software from a single source

# BMG | who we are

Bosch Manufacturing Solutions | BMG –  
Global industrialization partner & turnkey  
special machinery provider for

## Intelligent Production Equipment & Automation



> 30 years of experience in systems  
engineering – from process station to  
turnkey



> 5.000 assembly & testing systems  
> 10.000 small & services projects



Automation level adjustable,  
semi- to fully automated solutions



Digital planning & process to digital  
engineering & i4.0 applications

**>17**  
Locations



Full-liner  
**portfolio**



Several  
industries &  
product areas

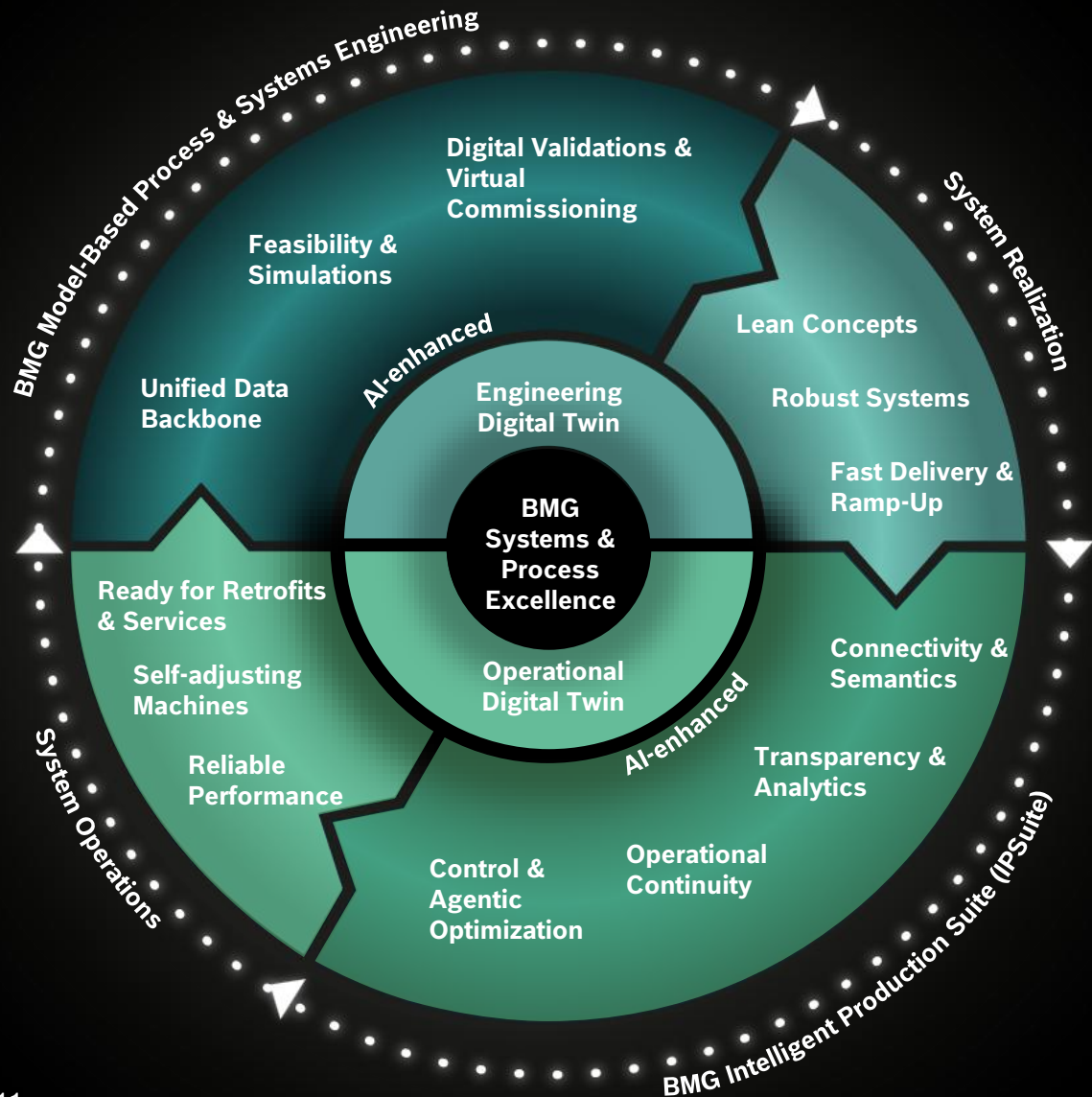


**1.800**  
Employees



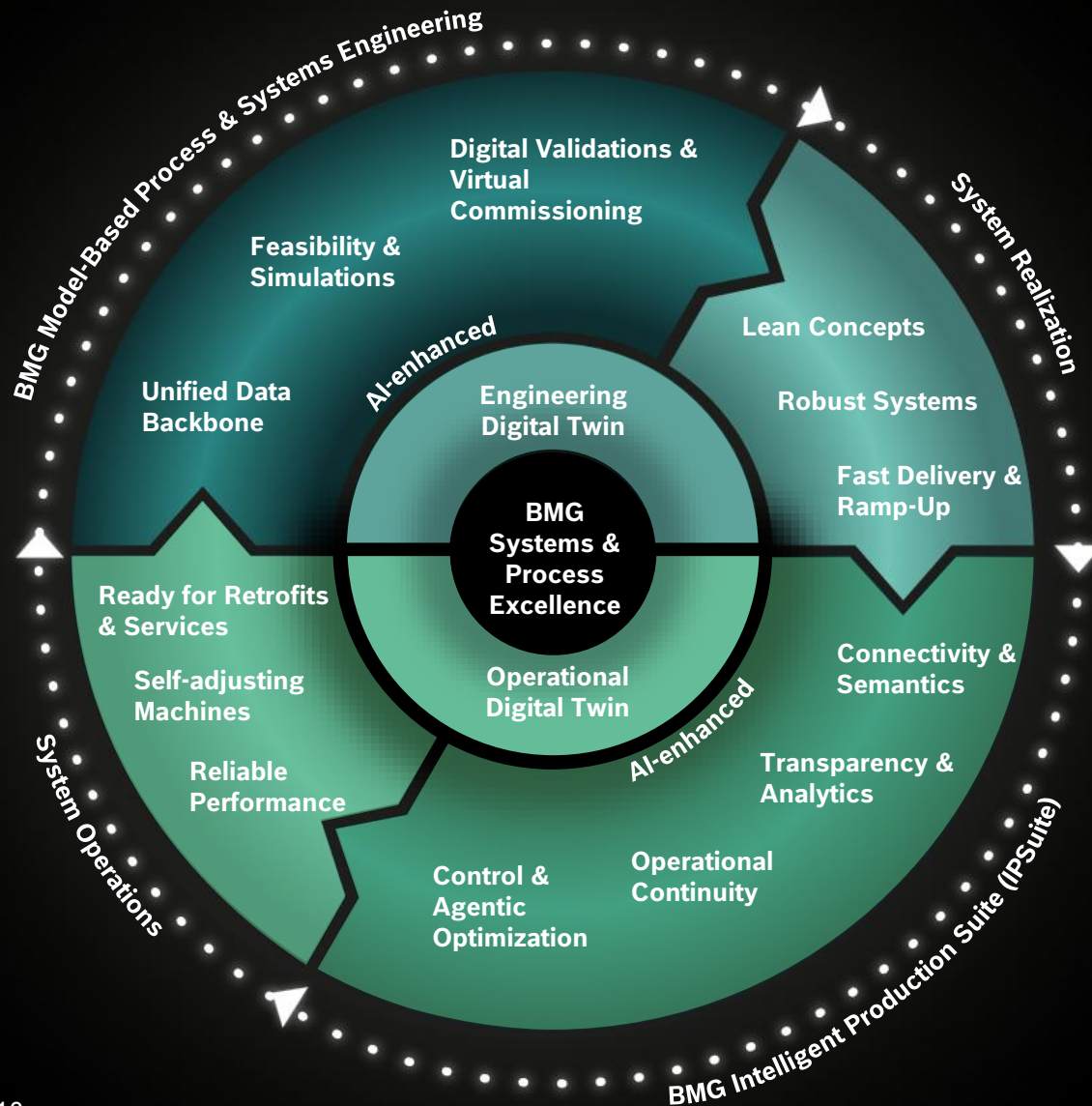
**~520**  
TNS m€





BMG | Intelligent Production Systems & Services

**Lean.**  
**Reliable.**  
**Adaptive.**



## Software Defined Systems & Services, enabling SDM:

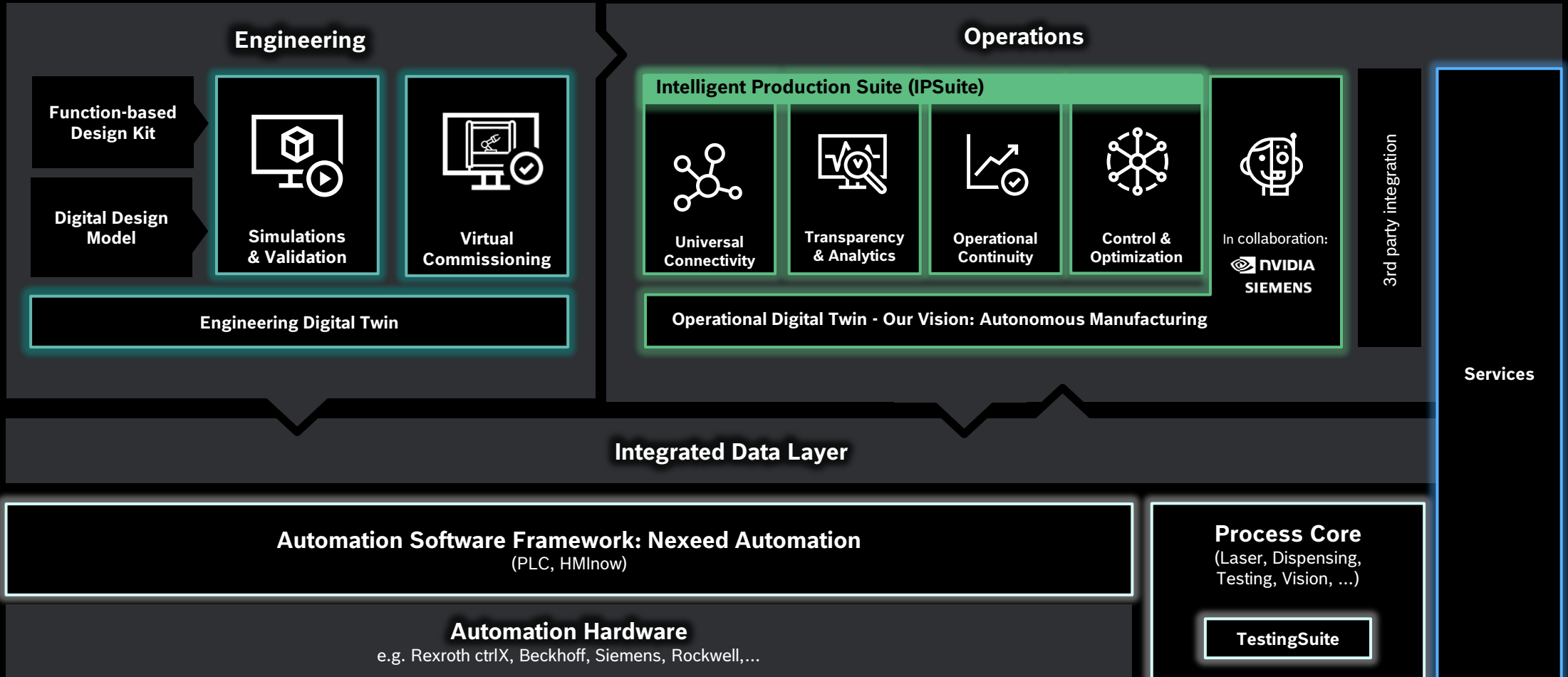
- Flexibility through modularization
- Reliability for demanding products
- Efficiency in MAE Invest & TCO view throughout the whole lifecycle

## Enabled by

- Digital, intelligent Engineering and Operations Solutions & Services
- A trustful industrialization partner with overall systems and strong process know-how

# BMG | Intelligent Production Systems & Services

## Digital Offer – From Engineering to intelligent & autonomous Operation



# BMG | our purpose statement

## The difference in manufacturing



For us, **‘Invented for life’** means to build a **more sustainable future** through production equipment by Bosch Manufacturing Solutions.

We create a difference in our customers’ products by offering **“the difference in manufacturing”**

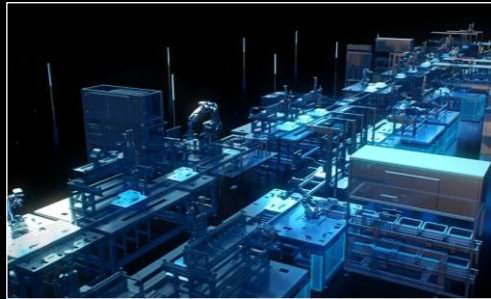
# BMG | our portfolio

## Customized assembly & testing systems

Global industrialization partner & turnkey special machinery provider for production equipment & automation, offering

# Customized assembly & testing systems

empowered by ...



**Engineering Consulting & Digital Engineering**



**Advanced Manufacturing Processes & Technologies**

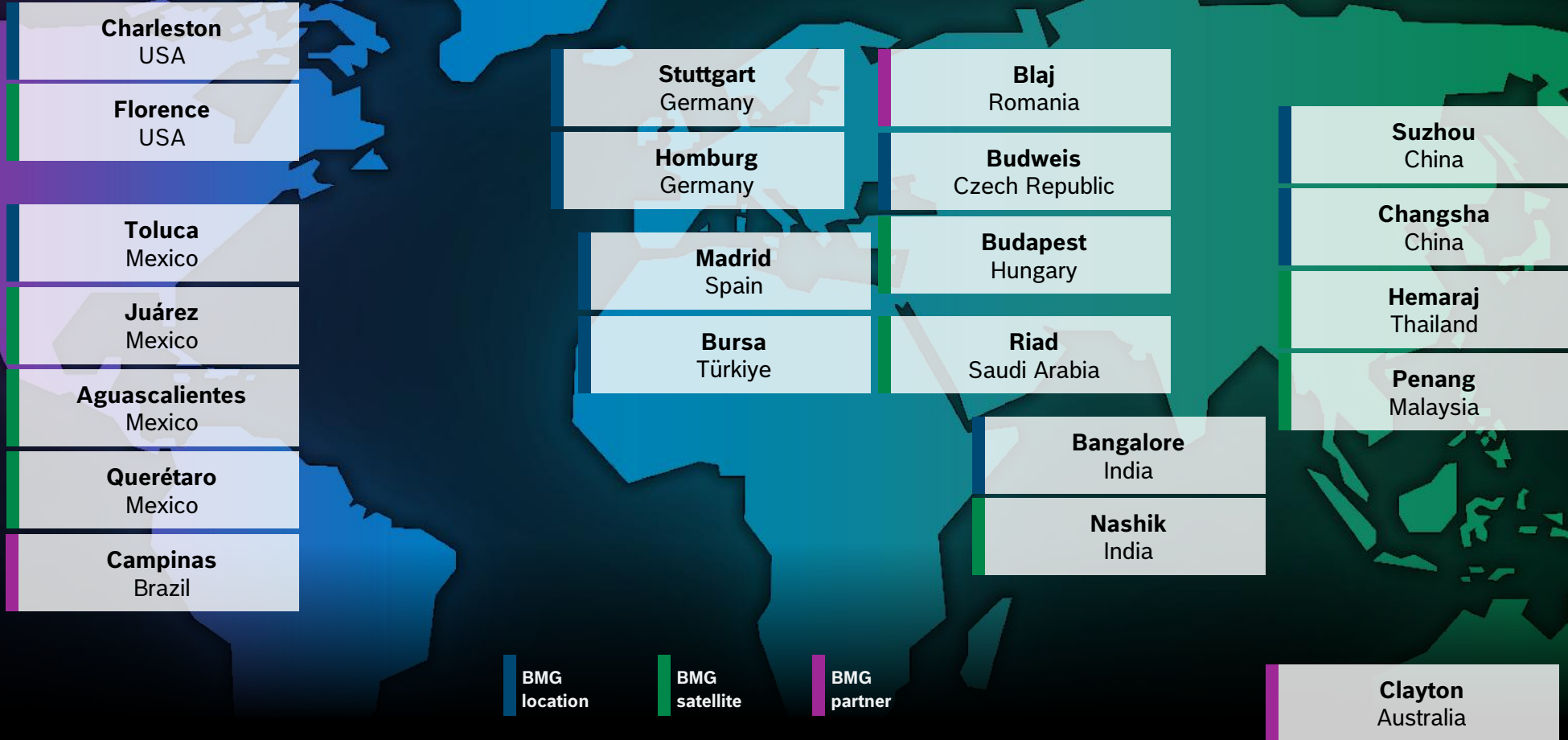


**Digital & Intelligent Solutions (IPSuite)**



**Services along the entire product lifecycle**

# BMG | global strength in network & partners



## Bosch Manufacturing Solutions



Executive Vice President  
**Guenter Krenz**  
(BMG/GP)



Vice President Finance & Administration  
**Dierk Goeckel**  
(BMG/FC)

**Bosch Manufacturing Solutions Feuerbach (BMG-1DE)**

Executive Vice President  
**Guenter Krenz**  
(BMG-1DE/PG)



Vice President Finance & Administration  
**Dierk Goeckel**  
(BMG-1DE/FC)



Legal Entity & Address:

Robert Bosch Manufacturing Solutions GmbH  
Wernerstraße 51  
70469 Stuttgart  
Germany

**Bosch Manufacturing Solutions Madrid (BMG-2ES)**

Technical & Commercial Responsibility  
**Michael Buschbacher**  
(BMG-2ES/TCR)

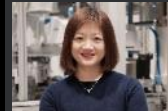


Legal Entity & Address:

Robert Bosch Espana Fábrica Madrid S.A.  
Hnos. Garcia Noblejas 19  
28037 Madrid  
Spain

**Bosch Manufacturing Solutions Suzhou & Changsha (BMG-XCN)**

Commercial Responsibility  
**Zonghui Xie**  
(BMG-XCN/COR)



Customer Projects China-Changsha Responsibility  
**Xingbin Liu**  
(BMG-XCN/CCN-CNG)



Legal Entity & Address:

Bosch Automotive Products (Suzhou) Co. Ltd.  
No. 455 Xing Long Street, Suzhou Industrial Park  
Suzhou 215021  
China

Vice President  
**Ryan Tang**  
(BMG-XCN/PG)



Engineering Responsibility  
**Xiaohu Zhang**  
(BMG-XCN/ECN)



Customer Projects China-Suzhou Responsibility  
**Xiangyang Jiang**  
(BMG-XCN/CCN-SZH)



Legal Entity & Address:

Bosch Automotive Products (Changsha) Co. Ltd.  
Lixiang (M) 26, Xingsha  
410100 Changsha, Hunan  
China

**Bosch Manufacturing Solutions Charleston (BMG-4AM)**

Technical Responsibility  
**Hugo Roquero Herranz**  
(BMG-4AM/TCR)



Legal Entity & Address:

Robert Bosch LCC  
8101 Dorchester Road  
Charleston, SC 29418  
USA

**Bosch Manufacturing Solutions Bangalore (BMG-6IN)**

Technical & Commercial Responsibility  
**Rajagopal S Nayak**  
(BMG-6IN/TCR)



Legal Entity & Address:

Bosch Limited,  
Naganathapura Plant  
PB No. 6887,  
Electronics City  
Bengaluru-560100  
Karnataka  
India

**Bosch Manufacturing Solutions Toluca (BMG-7AM)**

Technical & Commercial Responsibility  
**Jose Alberto Botello Gomez**  
(BMG-7AM/TCR)



Legal Entity & Address:

Robert Bosch S. de R.L. de C.V.  
Calle Robert Bosch 405  
50071 Toluca  
Mexico

**Bosch Manufacturing Solutions Bursa (BMG-8TR)**

Technical & Commercial Responsibility  
**Ersin Ucan**  
(BMG-8TR/TER)



Legal Entity & Address:

Bosch Sanayi ve Ticaret A.Ş.  
Organize Sanayi Bölgesi  
Eflatun Cad. No. 1  
16159 Nilüfer/BURSA  
Turkey

**Bosch Manufacturing Solutions Homburg (BMG-9DE)**

Technical Responsibility  
**Andreas Frede**  
(BMG-9DE/TE)



Commercial Responsibility  
**Christian Artmann**  
(BMG-9DE/FC)



Legal Entity & Address:

Moehwald GmbH  
Michelinstraße 21  
66424 Homburg  
Germany

# BMG | focus industries & product areas

## Focus industries



eMobility



Automotive (ICE)



Energy



Consumer Goods

## Focus product areas



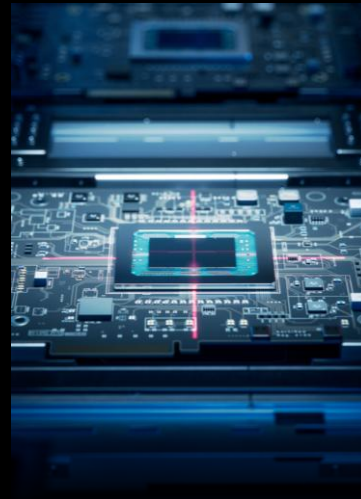
Battery



H2 Solutions / Fuel Cell



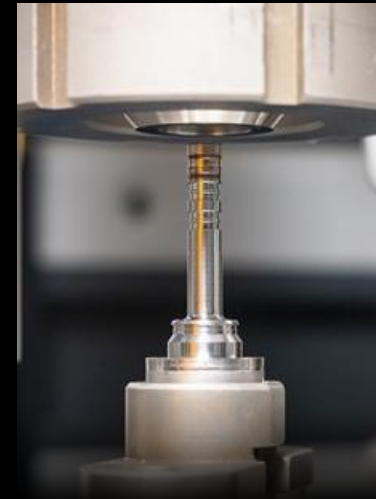
eDrive



Sensors & Electronics



Chassis & Steering



Combustion Engine

# Stay charged

with battery production equipment from Bosch Manufacturing Solutions | BMG. Our expertise reaches from cell production technologies up to fully automated and intelligent Cell to X assembly and testing systems.



## Cell Manufacturing

Smart Battery Formation

## Cell to X Manufacturing

Fast Cell Preparation

Cell Supply

Cell Cleaning

Electrical Testing (BOL/EOL)

Dispensing

Resistance Welding

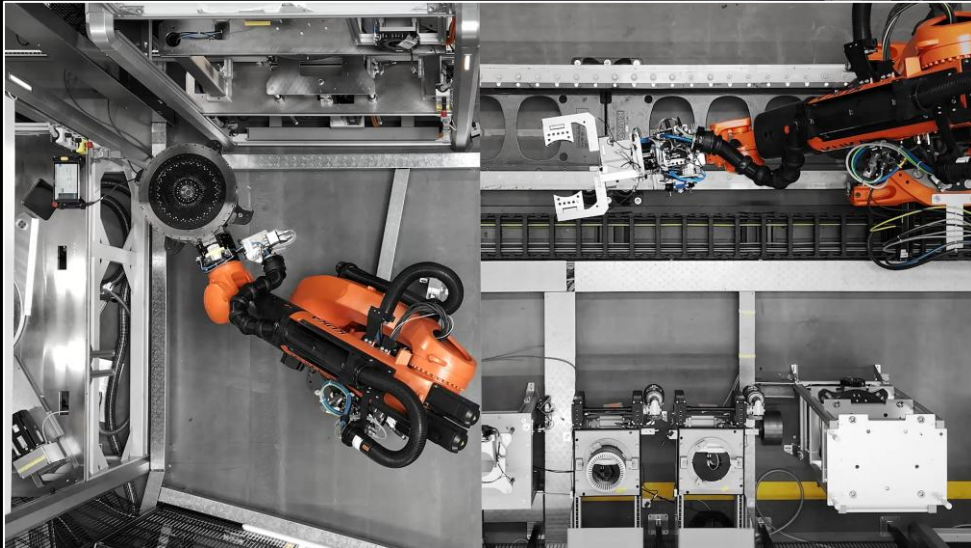
Laser Welding

Machine Vision

Leakage Testing

# Driving mobility

with innovative eDrive production equipment from Bosch Manufacturing Solutions | BMG. Our expertise ranges from various winding technologies such as Hair-Pin, I-Pin, X-Pin, for all vehicle classes, to individual line concepts from semi to fully automated, including AI based solutions for increased efficiency.



**eDrive Lab**

**eDrive – some process highlights**

**Pin Manufacturing**

**Handling & Robotics**

**Twisting**

**Laser Welding**

**Separating & Cutting**

**Trickling**

**Clamping**

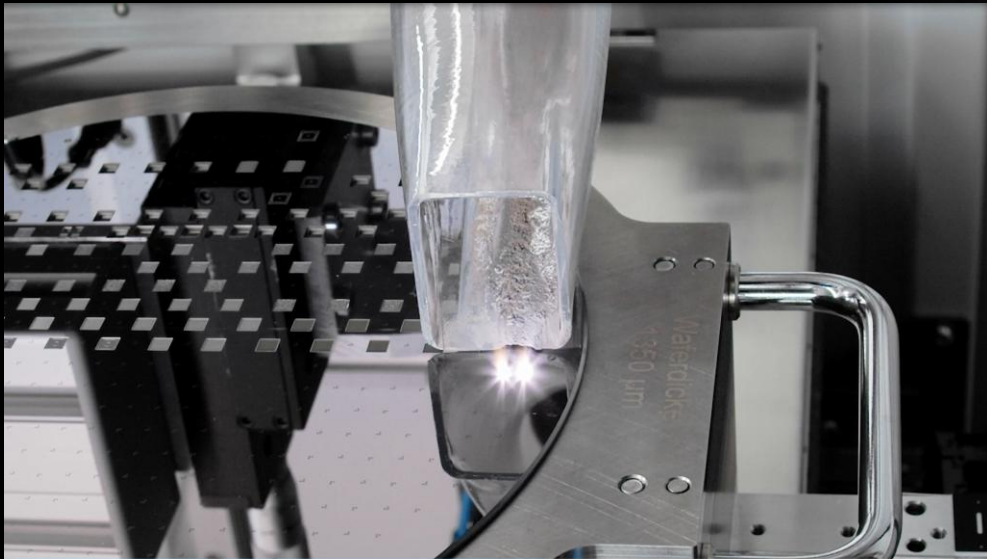
**Optical Inspection: Post Vision**

**Parameter Identification (PI) Testing**

**Further ...**

# Unleash the power

with sensors & electronics production equipment from Bosch Manufacturing Solutions | BMG. We provide flexible assembly technology for ECUs, power electronics, and sensors, mainly in eMobility. Our scalable solutions optimize investments and adapt to variable production volumes.



## Sensors & Electronics – some insights

Dispensing	Tightening
Laser Welding of Electrical Connections	Pressfit & Single Pin Insertion
Laser Micro Structuring	Optical Inspection
Laser Cleaning	Flexfoil Handling
PCB Milling Machine	Magnetic Conveyor System

# From Water to Energy –

empower your sustainable future with H<sub>2</sub> solutions by Bosch Manufacturing Solutions | BMG, in the area of water purification & electrolysis, fuel cell assembly & testing as well as power generation.



## » H2 circle – BMG as system industrialization partner

### Water Purification

- » BMG Pure Water System

### Electrolysis – from water to hydrogen

- » PEM Ely Stack Testing
- » PEM Electrolyzer System
- » AEM Ely Stack Testing
- » SOEC & SOFC Stack Testing

### Fuel Cell – from hydrogen to energy

- » PEMFC Testing
- » PEMFC – FCPM Assembly & Testing
- » PEMFC – FCPM Power Generator
- » PEMFC – FCPM – Bipolar Plates Processes
- » PEMFC – Coatings
- » Hydrogen Gas Injection
- » GDA – Shot to shot measurements

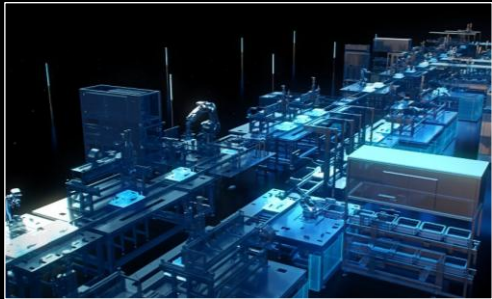
# BMG | our portfolio

## Customized assembly & testing systems

Global industrialization partner & turnkey special machinery provider for production equipment & automation, offering

# Customized assembly & testing systems

empowered by ...



**Engineering Consulting & Digital Engineering**



**Advanced Manufacturing Processes & Technologies**



**Digital & Intelligent Solutions (IPSuite)**



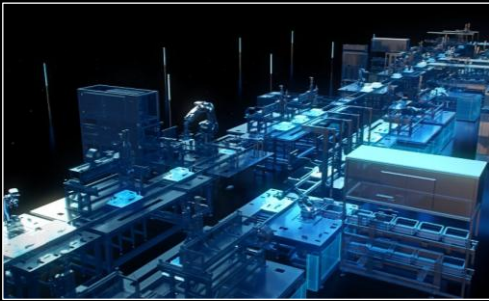
**Services along the entire product lifecycle**

# BMG | our portfolio

## Customized assembly & testing systems

## Customized assembly & testing systems

empowered by ...



### Engineering Consulting & Digital Engineering

- Engineering Consulting
- AI-powered Digital Engineering
- PLM & Data Integration
- Model-Based Systems Engineering
- Digital Twin incl. Virtual Simulations
- GenAI & AgenticAI



### Advanced Manufacturing Processes & Technologies

- Handling, Robotic & Automation
- Measurement & Testing
- Optical Inspection
- Forming
- Laser Technology
- Joining
- Surface Technology
- Separating



### Digital & Intelligent Solutions (IPSuite)

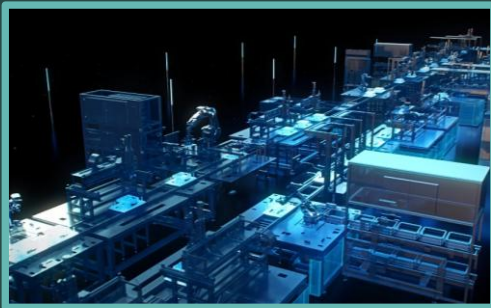
- Universal Connectivity
- Transparency & Analytics
- Operational Continuity
- Control & Optimization
- Structured Experience Sharing



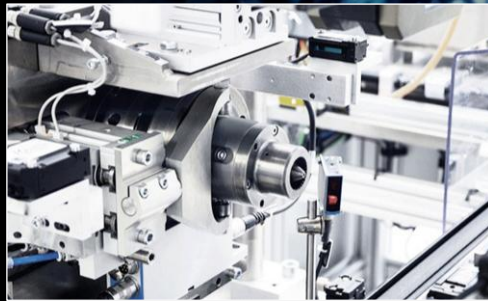
### Services along the entire product lifecycle

- Technical Support
- Modernization & Condition-based Services
- Engineering Services
- Spare Parts & Repairs
- Services Contracts

# Digital Engineering



**Engineering Consulting  
& Digital Engineering**



**Advanced Manufacturing  
Processes & Technologies**



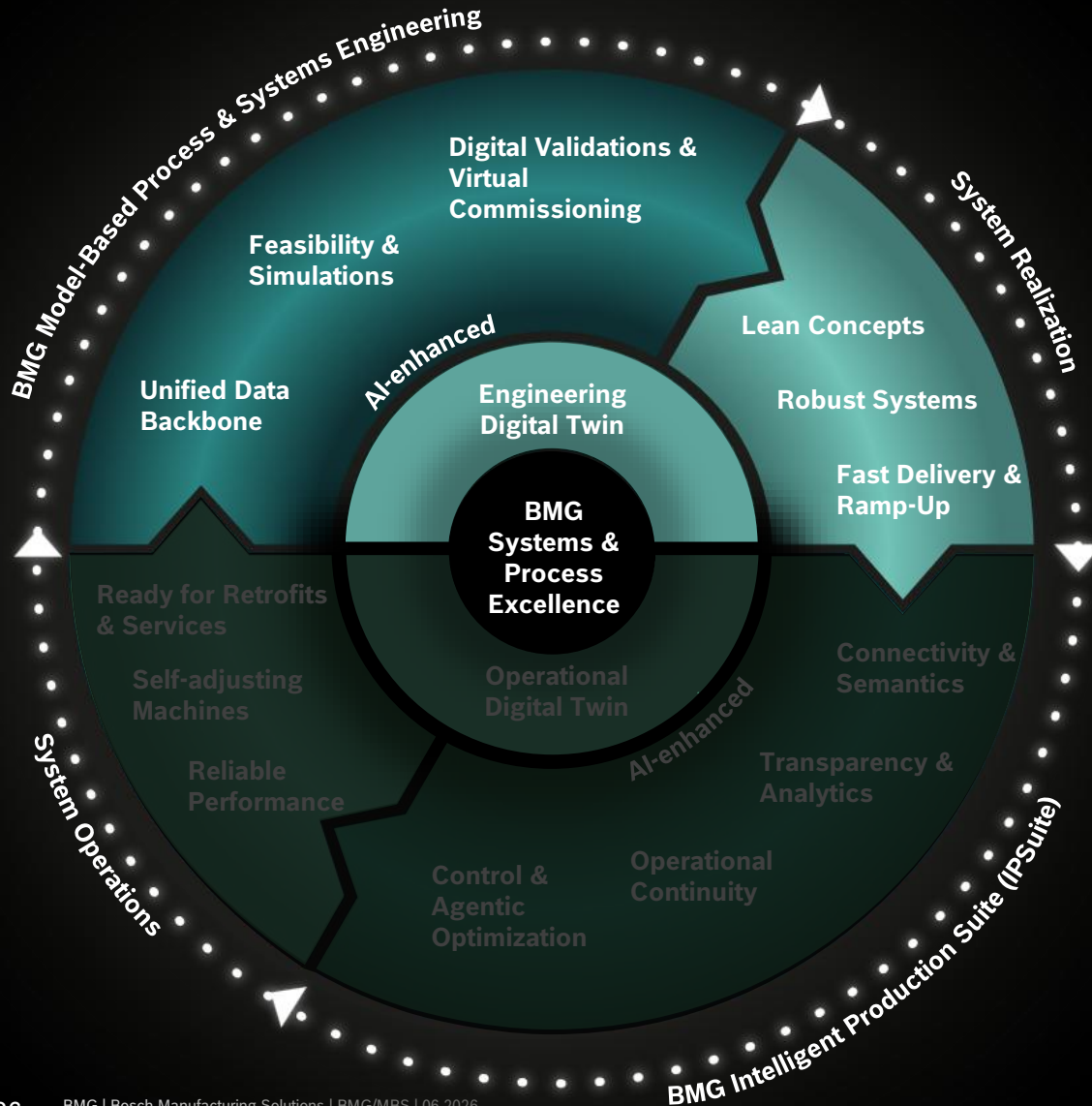
**Digital & Intelligent  
Solutions (IPSuite)**



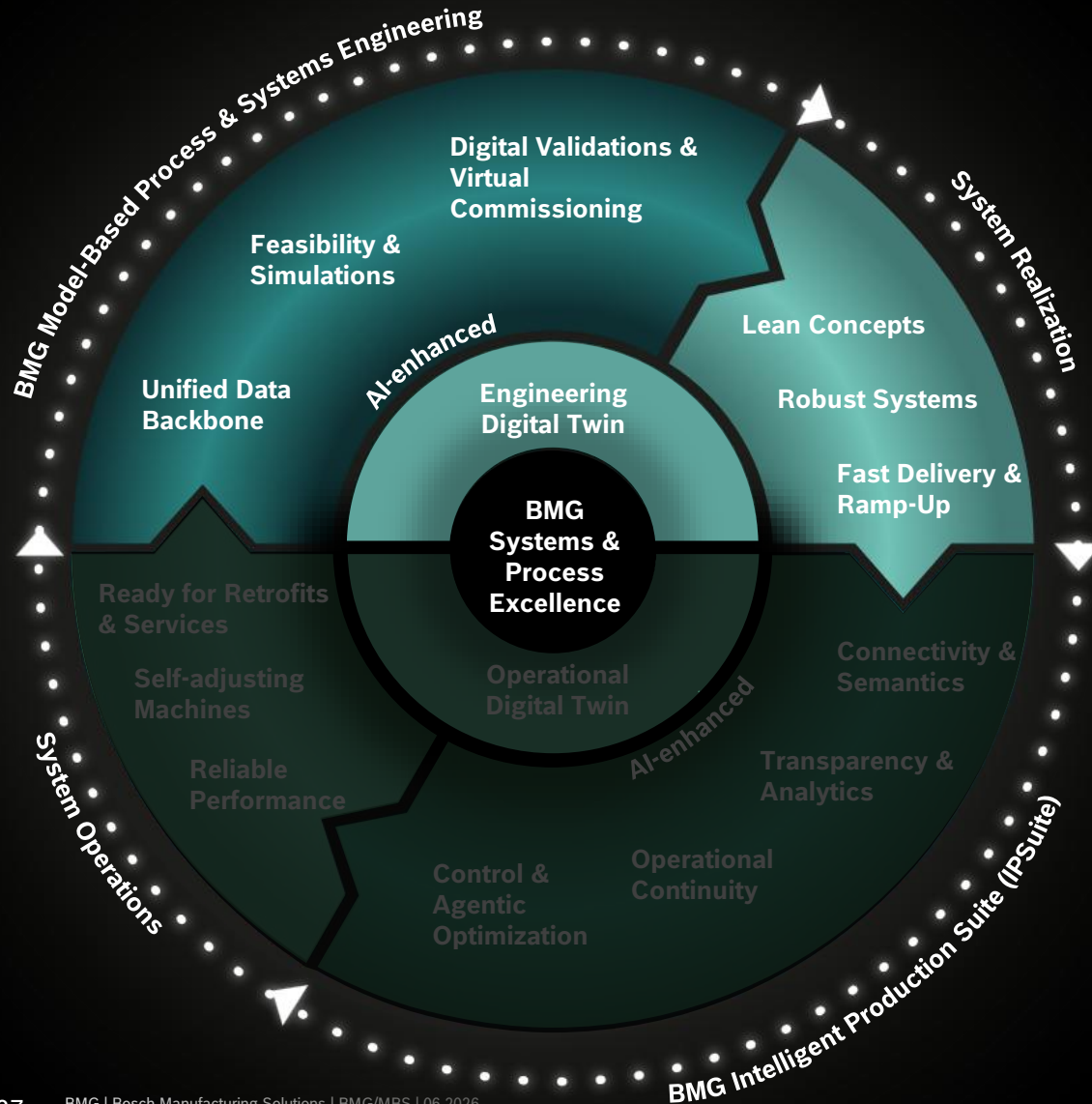
**Services along the entire  
product lifecycle**

BMG | Intelligent Production  
Systems & Services

# Digital Engineering



# Digital Engineering



- **SE work** for sustainable product design leading to simpler and more cost-effective manufacturing concepts
- **Simulations** before realization and evaluation of feasibility and technical requirements



**E2E connection and AI enabled digital approach** – from concept to operation



**Unified data backbone** linking mechanics, electrics, and software – base for **Digital Twins**

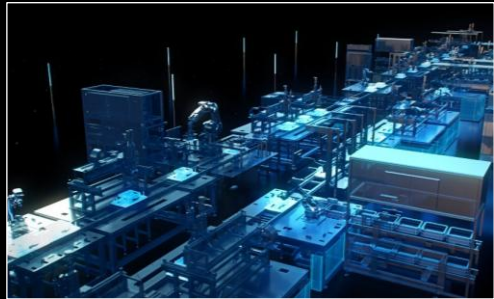


**Digital Twins** for simulations, validation, virtual commissioning, and rapid adaptations to design or process changes



**AI-driven** tools and seamless field-data integration for intelligent, self-optimizing, and predictive operation

# Manufacturing Processes & Technologies



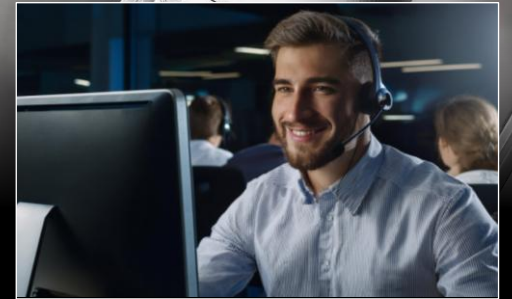
Engineering Consulting & Digital Engineering



Advanced Manufacturing Processes & Technologies



Digital & Intelligent Solutions (IPSuite)



Services along the entire product lifecycle

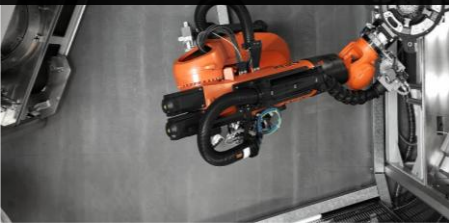
# BMG | our portfolio

## Manufacturing Processes & Technologies

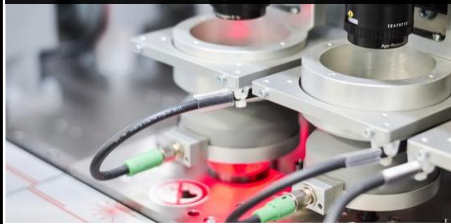
### Manufacturing Processes – innovative & intelligent.

Efficient solutions for demanding & customized applications

Handling, Robotic & Automation



Optical Inspection



Separating



Joining



Measurement & Testing



Laser Technology



Forming



Surface Technology



# BMG | our portfolio

## Manufacturing Processes & Technologies

### Manufacturing Processes – innovative & intelligent.

Efficient solutions for demanding & customized applications

#### Handling, Robotic & Automation

- Handling & Positioning
- Transfer, Transport & AGVs
- Robotics & Gripping
- Feeding, Clamping, Palletizing

#### Optical Inspection

- Assembly Guiding
- Process Control
- Quality Check End of Line / Inline

#### Separating

- Stripping / Skinning
- Cutting with undefined Edge (Internal Grinding & External Grinding)
- Balancing

#### Joining

- Resistance & keep welding
- Friction welding
- Ultrasonic welding
- Dispensing & gluing
- Tightening & screwing

#### Measurement & Testing

- Electrical Testing & Characterization
- Leakage, Gas & Pneumatic Testing

#### Laser Technology

- Laser Welding (on-the-fly)
- Laser Cutting
- Laser Drilling
- Laser Micro Structuring

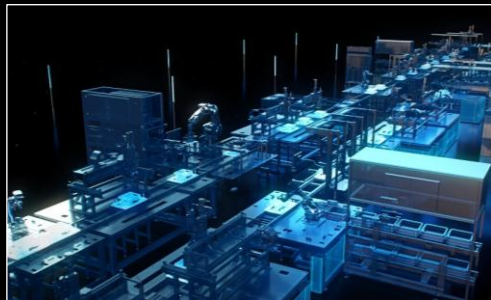
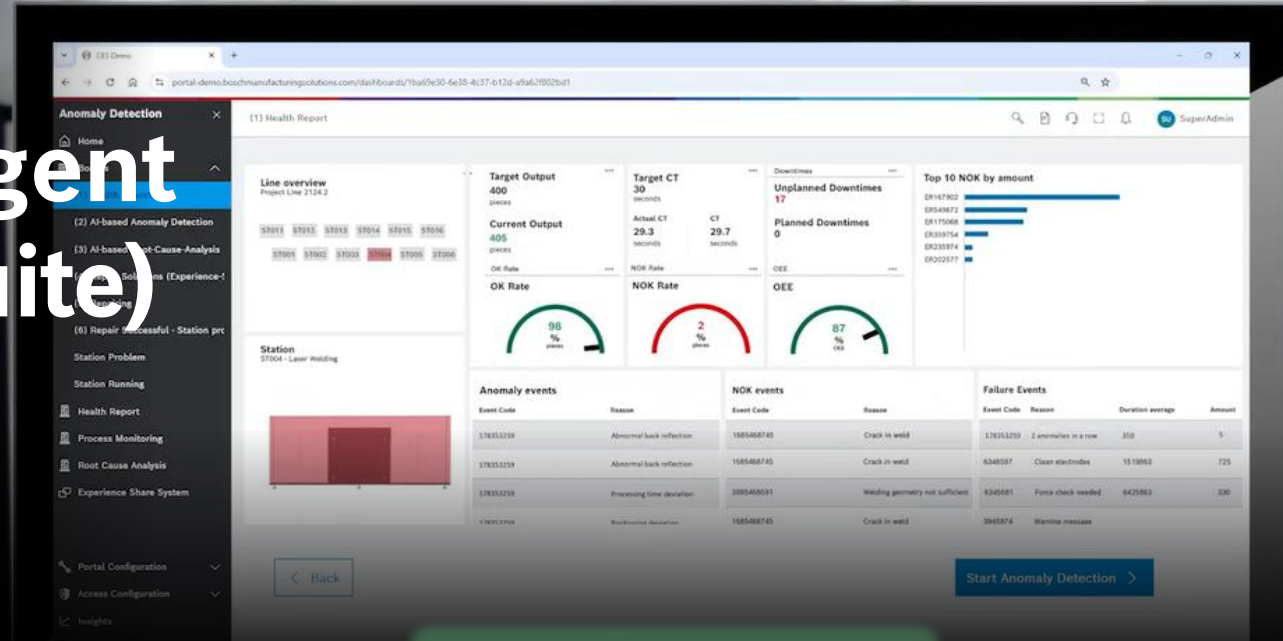
#### Forming

- Twisting
- Bending
- Winding
- 3D Forming

#### Surface Technology

- Electro plating
- PVD coating
- Functional printing

# Digital & Intelligent Solutions (IPSuite)



Engineering Consulting & Digital Engineering



Advanced Manufacturing Processes & Technologies



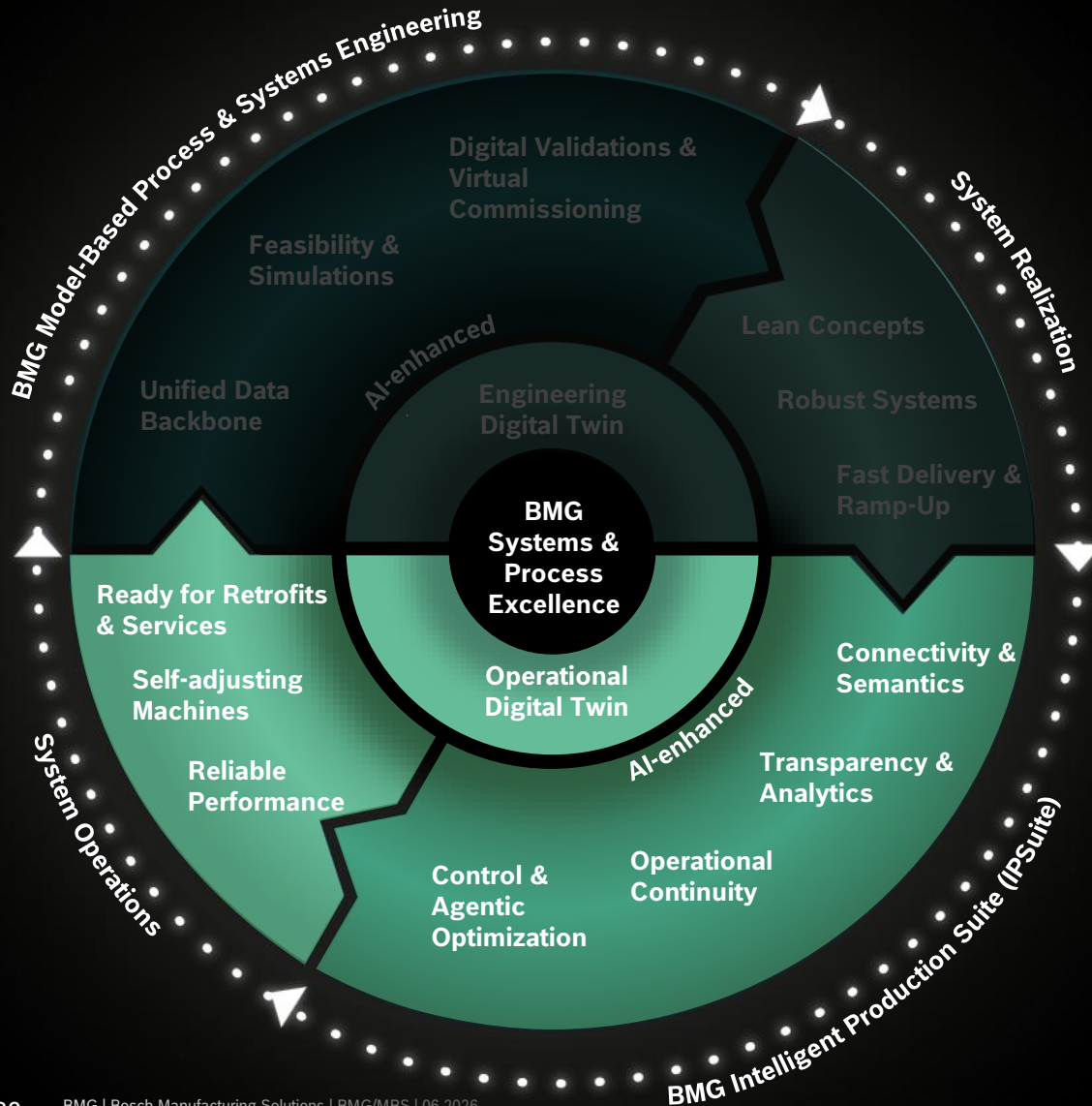
Digital & Intelligent Solutions (IPSuite)



Services along the entire product lifecycle

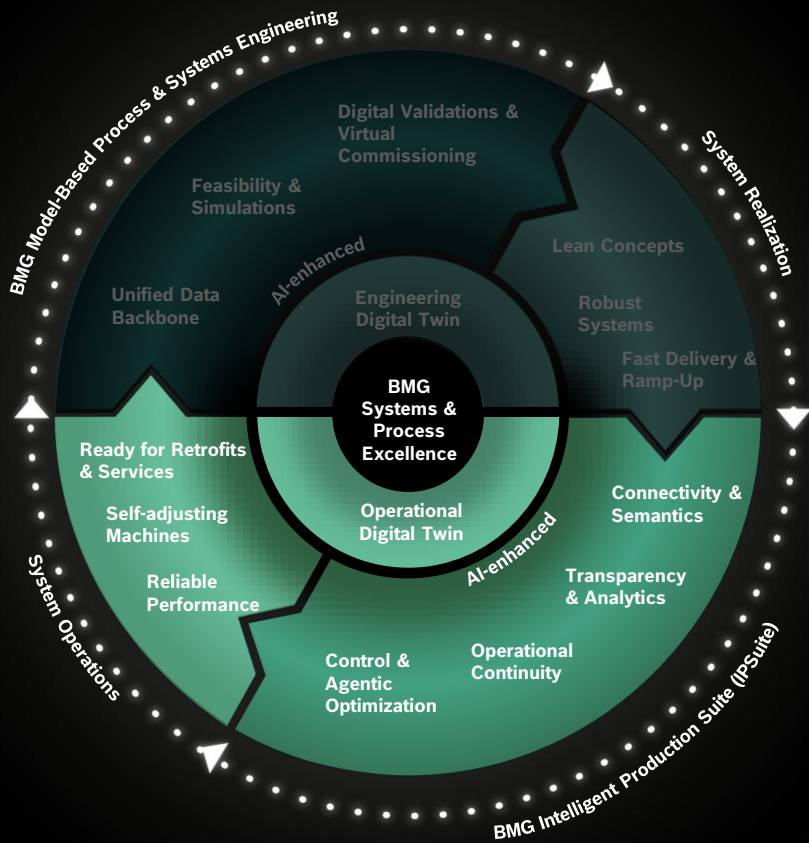
BMG | Intelligent Production  
Systems & Services

# Intelligent Production Suite



# BMG | our portfolio

## Intelligent Production Suite (IPSuite)



### Transparency & Analytics

#### Operational Insights

- Awareness & highlighting (Andon)
- Asset health
- Cycle time & dynamic bottlenecks

#### Process Analytics

- Process metrics
- Production parameters

#### Sustainability

- Energy consumption



### Operational Continuity

#### Preventive Maintenance

- Closed-loop ticketing

#### Predictive Maintenance

- Predictive analytics

#### Corrective Maintenance

- Anomaly detection
- Event-related video footage
- Virtual root cause localization



### Control & Optimization

#### Autonomous Processes

- Process model generation
- Process parameter optimization
- Custom algorithm execution
- Statistical process control

#### Autonomous Line & Value Stream

- Line and shopfloor control



### Foundation

Universal connectivity

Structured experience sharing

# Services along entire product lifecycle



Engineering Consulting & Digital Engineering



Advanced Manufacturing Processes & Technologies



Digital & Intelligent Solutions (IPSuite)



Services along the entire product lifecycle

# BMG | our portfolio

## Services along entire product lifecycle

With our comprehensive range of services, we ensure worldwide availability, fast response times, and flexible organization. We maintain consistent standards across all locations, providing you with local contacts for seamless support and efficient solutions wherever you are.



**Consulting Services & Services Contracts**



**Engineering Services**



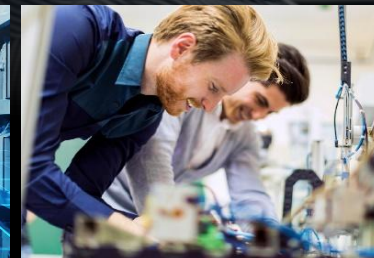
**Modernization & Condition-based Services**



**Technical Support**



**Spare parts & Repair Services**



**Training**



## Bosch Manufacturing Solutions | BMG

For further information please contact:

Mail: [contact@boschmanufacturingsolutions.com](mailto:contact@boschmanufacturingsolutions.com)

Web: [BoschManufacturingSolutions.com](https://BoschManufacturingSolutions.com)

©Robert Bosch Manufacturing Solutions GmbH, all rights reserved.

